

## THE IDEAL PARTNER IN HEAVY-DUTY LABELING SOLUTIONS.



The Epson LABELWORKS PX LW-PX900 label printer is engineered to fuse form and function – delivering superb print resolution at astounding speeds, the printer adapts well to a high-volume environment to perform continuous printing. Low operating cost is also a factor with the LW-PX900 capability to save on label cost. Epson tops it all with an ergonomic design and intuitive short-cut keys to deliver an experience that spells efficiency and productivity.

**LIFETIME  
WARRANTY**



**ENGINEERED FOR INDUSTRY**



Temperature resistance



Water resistance



Chemical resistance



Humidity resistance



Scratch resistance

### **WIDER**

Expand labeling applications with supplies up to 36mm wide, and in a variety of materials such as magnetic tape and heat shrink tube.

### **FASTER**

Brilliant print speeds of up to 35mm/sec at superb print resolution ensures a quick turnaround time with no compromise on quality.

### **EASIER & BETTER**

Minimize tape waste with shorter lead margin of up to 4mm\* and streamline label creating with industry application hot-keys and ergonomic design.

## LABELWORKS PX LW-PX900

Catered to meet demanding industrial standards, the LW-PX900 is able to satisfy a wide array of needs by conforming to their application-specific requirements through the diverse range of label tapes that Epson offers.



### Extraordinary Productivity

Print speeds of up to 35mm/sec at 360 dpi resolution will allow for a quick turnaround time with exceptional print quality. Engineered for increased productivity with its intuitive half-cut, pick-and-print and drop-stop features, you can peel individual labels as they print or commit to continuous printing.

Epson's LW-PX900 presents itself as an industry first with the option for mix-length printing to significantly save time by allowing you to create variable-length labels in a single print.

#### Pick-and-Print



#### Mix-length Printing

Cable Do Not Connect 5-Pins Connector

#### Half-cut





## MINIMAL OPERATING COST

Minimize tape wastage and maximize cost-savings with a large backlit screen to preview printouts. Get more out of each roll of label tape with print margins as low as 4mm\* through the auto tape rewind function that retracts excess tape. Epson's labels allow lasting longevity and contribute to more cost-savings by eliminating the need for constant replacement.



\*Applicable for selected tapes.

## ENGINEERED FOR EASE

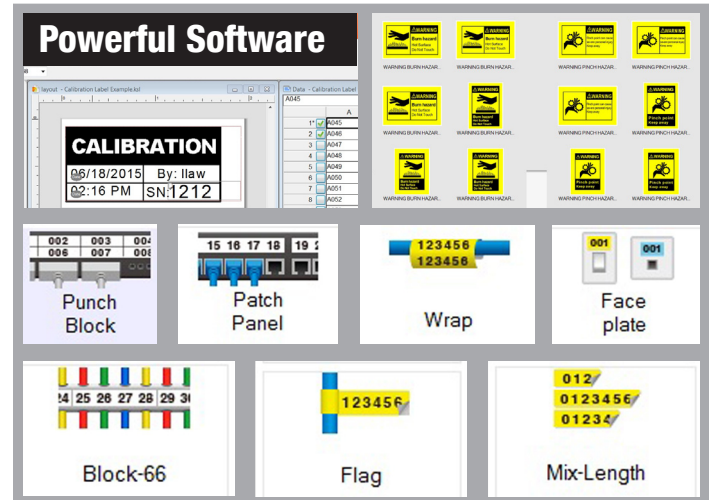
### Intuitive Ergonomic Design

Configure your printouts quicker, with more efficiency through conveniently located short-cut keys to configure your printouts. Experience convenience through the ease of tape cartridge replacement from a front opening and the magnetic mounting capability.



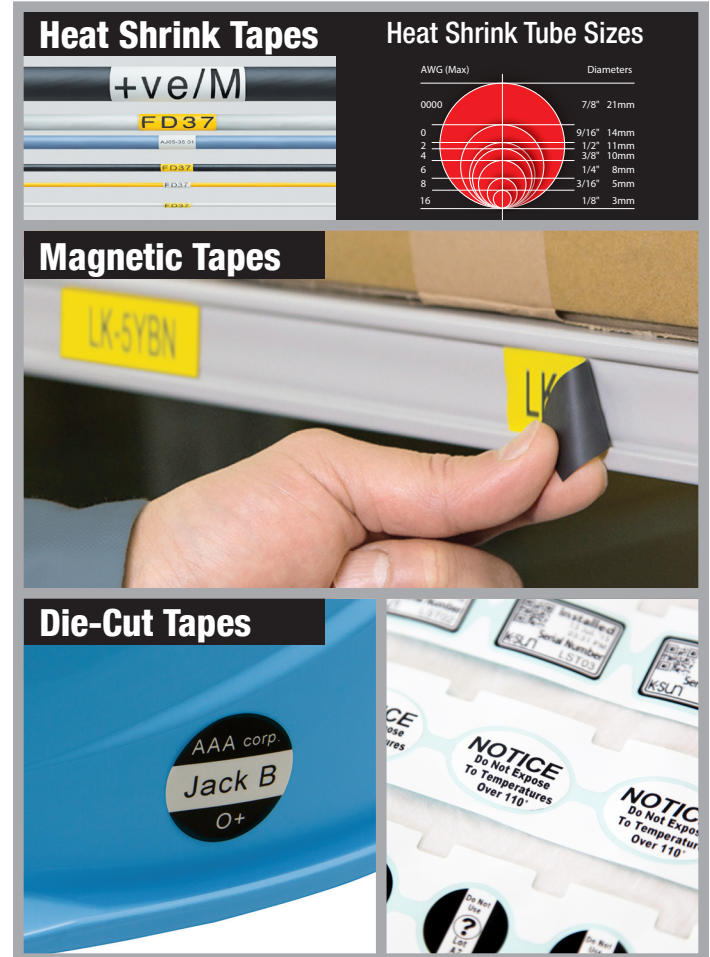
### Ultimate Versatility with Epson Label Editor Pro

The LW-PX900 comes bundled with the Epson Label Editor software for a more customizable experience. The software comes with more than 70 pre-installed templates to create custom labels and also allows more customization of labels with its capability to import images and barcodes.



## ASSORTED VARIETY OF TAPES

To complement the LW-PX900, Epson offers an assorted variety of high-quality labels in a diverse range of style, size and colors to let you create application-specific labels to accommodate your needs. Tape widths range from 4mm up to 36mm. Taking industrial applications into consideration, Epson's comprehensive list offers cable-wrap, die-cut, heat shrink tapes, and magnetic tapes.



# SPECIFICATIONS

## LABELWORKS PX LW-PX900

**EPSON®**  
EXCEED YOUR VISION

Model Number	LW-PX900
<b>Printing</b>	
Technology	Thermal Transfer
Tape Width	6-36mm
Resolution	360 dpi
Printable Dot Numbers	384 dot numbers
Max Print Height	27.1mm
Max Print Speed	35mm / sec (With AC Adaptor or Li-ion battery) 15mm / sec (With 6 AA Batteries)
<b>Print Settings</b>	
Repeat Printing	Yes
Auto Increment	Yes
Data Import	Yes
Number Serialization	Up to 4 alpha-numeric characters
Mirror Printing	Yes
Vertical Printing	Yes
Multi Line Printing	Standalone mode: Up to 13 lines (with 36mm tape)
Margins	Minimum 4mm lead on standard industrial tapes. Specialty tape lead margin varies by supply Batch printing settings from 1 to 500mm
Fixed Length	Auto / Custom
Cable Wrap	Yes
Flag	Yes
QR Code	Yes
Barcodes	via Handheld: 9 types EAN 8, EAN 13, Code 39, Code 128, UPC-A, UPC-E, ITF, CodaBar, QR Code via Label Editor Pro: 15 types EAN 8, EAN 13, Code 39, Code 128, UPC-A, UPC-E, ITF, CodaBar, QR Code, NW-7 (CodaBar), EAN-128(GS1-128), GS1 DataBar, MaxiCode, PDF417, DataMatrix
Symbols	859 industrial and professional symbols
<b>Hardware</b>	
Cutter	Automatic with half-cut function
Detection	Cover Open, Battery Level, Tape Detection (Type and size)
Drop-Stop & Pick-and-Print	Prints, cuts and holds tape until it is pulled from printer before printing the next label in the batch automatically
LCD	140 x 80 dot back-lit monochrome LCD
Internal Memory	Up to 100 files
<b>Connectivity</b>	
Interface	USB 2.0
Software	Epson Label Editor: Windows Vista, 7, 8, 8.1, 10
<b>Other Information</b>	
AC Adapter	Yes
Battery	6AA (Not Included)
<b>Consumables</b>	
Li-ion Battery	Spec 1,950mAh

### LW-PX900



### LW-PX900PC



### LW-PX900PCD



### LW-PX900 "Full" Kit SKU: LW-PX900PCD

- LW-PX900 printer
- AC Adapter
- 212BWPX tape cartridge
- Li-ion battery
- Label Editor Pro software
- USB cable
- Magnet attachments
- Owner's manual
- Industrial carrying case

© 2017 Epson LABELWORKS PX. All Rights Reserved. Reproduction in part or in whole, without the written permission from Epson, is strictly prohibited. EPSON and EXCEED YOUR VISION are registered trademarks of Seiko Epson Corporation. All other products names and other company names used herein are for identification purposes only and are the trademarks or registered trademarks of their respective owners. Epson disclaims any and all rights in those marks. Print samples shown are simulations only. Specifications and product availability are subject to change without notice and may vary between countries. Please check with local Epson offices for more information.

Apple, iPad and iPhone are trademarks of Apple Inc., registered in the U.S. and other countries. App Store is a service mark of Apple Inc.

Android is a trademark of Google Inc.

Dealer's Stamp

Information correct as of July 2017